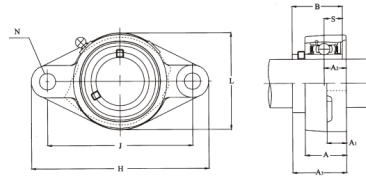
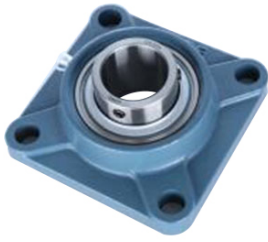


## UCF 系列



轴承单元型号	轴承型号	轴承座型号	轴直径		临界尺寸 (mm)									螺栓尺寸	重量 (Kg)
			in.	mm	a	e	i	g	l	s	z	Bi	n		
UCF201-8	UC201-8	F204	1/2	-	86	63.5	15	11	25.4	12	33.3	31	12.7	3/8	0.7
UCF202-10	UC202-10	F204	5/8	-	86	63.5	15	11	25.4	12	33.3	31	12.7	3/8	0.7
UCF204	UC204	F204	-	20	86	63.5	15	11	25.4	12	33.3	31	12.7	M10	0.7
UCF204-12	UC204-12	F204	3/4	-	86	63.5	15	11	25.4	12	33.3	31	12.7	3/8	0.7
UCF205	UC205	F205	-	25	95	70	16	13	27	12	35.7	34	14.3	M10	0.8
UCF205-14	UC205-14	F205	7/8	-	95	70	16	13	27	12	35.7	34	14.3	3/8	0.8
UCF205-15	UC205-15	F205	15/16	-	95	70	16	13	27	12	35.7	34	14.3	3/8	0.8
UCF205-16	UC205-16	F205	1	-	95	70	16	13	27	12	35.7	34	14.3	3/8	0.8
UCF206	UC206	F206	-	30	108	83	18	13	31	12	40.2	38.1	15.9	M10	1
UCF206-17	UC206-17	F206	1-1/16	-	108	83	18	13	31	12	40.2	38.1	15.9	3/8	1
UCF206-18	UC206-18	F206	1-1/8	-	108	83	18	13	31	12	40.2	38.1	15.9	3/8	1
UCF206-19	UC206-19	F206	1-3/16	-	108	83	18	13	31	12	40.2	38.1	15.9	3/8	1
UCF206-20	UC206-20	F206	1-1/4	-	108	83	18	13	31	12	40.2	38.1	15.9	3/8	1
UCF207	UC207	F207	-	35	117	92	19	15	34	14	44.4	42.9	17.5	M12	1.4
UCF207-20	UC207-20	F207	1-1/4	-	117	92	19	15	34	14	44.4	42.9	17.5	7/16	1.4
UCF207-21	UC207-21	F207	1-5/16	-	117	92	19	15	34	14	44.4	42.9	17.5	7/16	1.4
UCF207-22	UC207-22	F207	1-3/8	-	117	92	19	15	34	14	44.4	42.9	17.5	7/16	1.4
UCF207-23	UC207-23	F207	1-7/16	-	117	92	19	15	34	14	44.4	42.9	17.5	7/16	1.4
UCF208	UC208	F208	-	40	130	102	21	15	36	16	51.2	49.2	19	M14	1.8
UCF208-24	UC208-24	F208	1-1/2	-	130	102	21	15	36	16	51.2	49.2	19	1/2	1.8
UCF208-25	UC208-25	F208	1-9/16	-	130	102	21	15	36	16	51.2	49.2	19	1/2	1.8
UCF209	UC209	F209	-	45	137	105	22	16	38	16	52.2	49.2	19	M14	2.2
UCF209-26	UC209-26	F209	1-5/8	-	137	105	22	16	38	16	52.2	49.2	19	1/2	2.2
UCF209-27	UC209-27	F209	1-11/16	-	137	105	22	16	38	16	52.2	49.2	19	1/2	2.2
UCF209-28	UC209-28	F209	1-3/4	-	137	105	22	16	38	16	52.2	49.2	19	1/2	2.2
UCF210	UC210	F210	-	50	143	111	22	16	40	16	54.6	51.6	19	M14	2.4
UCF210-30	UC210-30	F210	1-7/8	-	143	111	22	16	40	16	54.6	51.6	19	1/2	2.4

## UCF 系列

UCF210-31	UC210-31	F210	1-15/16	-	143	111	22	16	40	16	54.6	51.6	19	1/2	2.4
UCF210-32	UC210-32	F210	2	-	143	111	22	16	40	16	54.6	51.6	19	1/2	2.4
UCF211	UC211	F211	-	55	162	130	25	18	43	19	58.4	55.6	22.2	M16	3.6
UCF211-32	UC211-32	F211	2	-	162	130	25	18	43	19	58.4	55.6	22.2	5/8	3.6
UCF211-34	UC211-34	F211	2-1/8	-	162	130	25	18	43	19	58.4	55.6	22.2	5/8	3.6
UCF211-35	UC211-35	F211	2-3/16	-	162	130	25	18	43	19	58.4	55.6	22.2	5/8	3.6
UCF212	UC212	F212	-	60	175	143	29	18	48	19	68.7	65.1	25.4	M16	4.4
UCF212-36	UC212-36	F212	2-1/4	-	175	143	29	18	48	19	68.7	65.1	25.4	5/8	4.4
UCF212-38	UC212-38	F212	2-3/8	-	175	143	29	18	48	19	68.7	65.1	25.4	5/8	4.4
UCF212-39	UC212-39	F212	2-7/16	-	175	143	29	18	48	19	68.7	65.1	25.4	5/8	4.4
UCF213	UC213	F213	-	65	187	149	30	22	50	19	69.7	65.1	25.4	M16	5.5
UCF213-40	UC213-40	F213	2-1/2	-	187	149	30	22	50	19	69.7	65.1	25.4	5/8	5.5
UCF214	UC214	F214	-	70	193	152	31	22	54	19	75.4	74.6	30.2	M16	6.1
UCF214-43	UC214-43	F214	2-11/16	-	193	152	31	22	54	19	75.4	74.6	30.2	5/8	6.1
UCF214-44	UC214-44	F214	2-3/4	-	193	152	31	22	54	19	75.4	74.6	30.2	5/8	6.1
UCF215	UC215	F215	-	75	200	159	34	22	56	19	78.5	77.8	33.3	M16	6.9
UCF215-47	UC215-47	F215	2-15/16	-	200	159	34	22	56	19	78.5	77.8	33.3	5/8	6.9
UCF215-48	UC215-48	F215	3	-	200	159	34	22	56	19	78.5	77.8	33.3	5/8	6.9