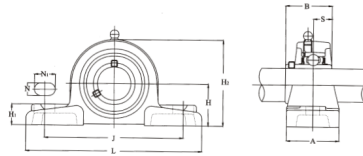
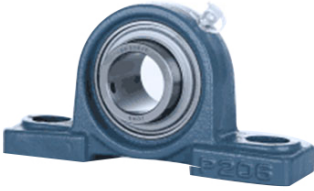


UCP 系列



单元型号	轴承型号	轴承座型号	轴直径		临界尺寸 (mm)										螺栓尺寸	重量 (Kg)
			in.	mm	h	a	e	b	s1	s2	g	w	Bi	n		
UCP201-8	UC201-8	P204	1/2	-	33.3	127	95	38	13	16	15	65	31	12.7	3/8	0.8
UCP202-10	UC202-10	P204	5/8	-	33.3	127	95	38	13	16	15	65	31	12.7	3/8	0.8
UCP204	UC204	P204	-	20	33.3	127	95	38	13	16	15	65	31	12.7	M10	0.8
UCP204-12	UC204-12	P204	3/4	-	33.3	127	95	38	13	16	15	65	31	12.7	3/8	0.8
UCP205	UC205	P205	-	25	36.6	140	105	38	13	16	16	70	34	14.3	M10	1
UCP205-14	UC205-14	P205	7/8	-	36.6	140	105	38	13	16	16	70	34	14.3	3/8	1
UCP205-15	UC205-15	P205	15/16	-	36.6	140	105	38	13	16	16	70	34	14.3	3/8	1
UCP205-16	UC205-16	P205	1	-	36.6	140	105	38	13	16	16	70	34	14.3	3/8	1
UCP206	UC206	P206	-	30	42.9	165	121	48	17	21	18	83	38.1	15.9	M14	1.6
UCP206-17	UC206-17	P206	1-1/16	-	42.9	165	121	48	17	21	18	83	38.1	15.9	1/2	1.6
UCP206-18	UC206-18	P206	1-1/8	-	42.9	165	121	48	17	21	18	83	38.1	15.9	1/2	1.6
UCP206-19	UC206-19	P206	1-3/16	-	42.9	165	121	48	17	21	18	83	38.1	15.9	1/2	1.6
UCP206-20	UC206-20	P206	1-1/4	-	42.9	165	121	48	17	21	18	83	38.1	15.9	1/2	1.6
UCP207	UC207	P207	-	35	47.6	167	127	48	17	21	19	94	42.9	17.5	M14	2.1
UCP207-20	UC207-20	P207	1-1/4	-	47.6	167	127	48	17	21	19	94	42.9	17.5	1/2	2.1
UCP207-21	UC207-21	P207	1-5/16	-	47.6	167	127	48	17	21	19	94	42.9	17.5	1/2	2.1
UCP207-22	UC207-22	P207	1-3/8	-	47.6	167	127	48	17	21	19	94	42.9	17.5	1/2	2.1
UCP207-23	UC207-23	P207	1-7/16	-	47.6	167	127	48	17	21	19	94	42.9	17.5	1/2	2.1
UCP208	UC208	P208	-	40	49.2	184	137	54	17	25	19	100	49.2	19	M14	2.6
UCP208-24	UC208-24	P208	1-1/2	-	49.2	184	137	54	17	25	19	100	49.2	19	1/2	2.6
UCP208-25	UC208-25	P208	1-9/16	-	49.2	184	137	54	17	25	19	100	49.2	19	1/2	2.6
UCP209	UC209	P209	-	45	54	190	146	54	17	25	20	108	49.2	19	M14	3
UCP209-26	UC209-26	P209	1-5/8	-	54	190	146	54	17	25	20	108	49.2	19	1/2	3
UCP209-27	UC209-27	P209	1-11/16	-	54	190	146	54	17	25	20	108	49.2	19	1/2	3
UCP209-28	UC209-28	P209	1-3/4	-	54	190	146	54	17	25	20	108	49.2	19	1/2	3
UCP210	UC210	P210	-	50	57.2	206	159	60	20	25	22	114	51.6	19	M16	3.6
UCP210-30	UC210-30	P210	1-7/8	-	57.2	206	159	60	20	25	22	114	51.6	19	5/8	3.6
UCP210-31	UC210-31	P210	1-15/16	-	57.2	206	159	60	20	25	22	114	51.6	19	5/8	3.6

UCP 系列

UCP210-32	UC210-32	P210	2	-	57.2	206	159	60	20	25	22	114	51.6	19	5/8	3.6
UCP211	UC211	P211	-	55	63.5	219	171	60	20	25	22	126	55.6	22.2	M16	4.4
UCP211-32	UC211-32	P211	2	-	63.5	219	171	60	20	25	22	126	55.6	22.2	5/8	4.4
UCP211-34	UC211-34	P211	2-1/8	-	63.5	219	171	60	20	25	22	126	55.6	22.2	5/8	4.4
UCP211-35	UC211-35	P211	2-3/16	-	63.5	219	171	60	20	25	22	126	55.6	22.2	5/8	4.4
UCP212	UC212	P212	-	60	69.8	241	184	70	20	25	25	138	65.1	25.4	M16	6.2
UCP212-36	UC212-36	P212	2-1/4	-	69.8	241	184	70	20	25	25	138	65.1	25.4	5/8	6.2
UCP212-38	UC212-38	P212	2-3/8	-	69.8	241	184	70	20	25	25	138	65.1	25.4	5/8	6.2
UCP212-39	UC212-39	P212	2-7/16	-	69.8	241	184	70	20	25	25	138	65.1	25.4	5/8	6.2
UCP213	UC213	P213	-	65	76.2	265	203	70	25	29	27	150	65.1	25.4	M20	7
UCP213-40	UC213-40	P213	2-1/2	-	76.2	265	203	70	25	29	27	150	65.1	25.4	3/4	7
UCP214	UC214	P214	-	70	79.4	266	210	72	25	31	27	156	74.6	30.2	M20	7.6
UCP214-43	UC214-43	P214	2-11/16	-	79.4	266	210	72	25	31	27	156	74.6	30.2	3/4	7.6
UCP214-44	UC214-44	P214	2-3/4	-	79.4	266	210	72	25	31	27	156	74.6	30.2	3/4	7.6
UCP215	UC215	P215	-	75	82.6	275	217	74	25	31	28	163	77.8	33.3	M20	8.5
UCP215-47	UC215-47	P215	2-15/16	-	82.6	275	217	74	25	31	28	163	77.8	33.3	3/4	8.5
UCP215	UC215-48	P215	3	-	82.6	275	217	74	25	31	28	163	77.8	33.3	3/4	8.5