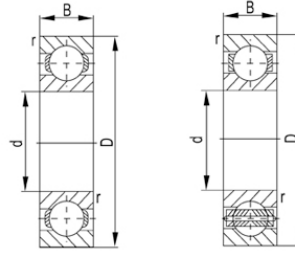
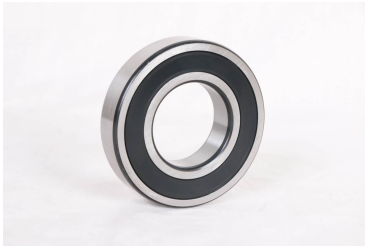


## 63000 系列



轴承型号	尺寸 [mm]				基本额定功率(kN)		Mass
	d	D	B	rs min	动态(Cr)	静态(Cor)	Kg
63001	12	28	12	-	-	-	-
63002	15	32	13	-	-	-	-
63003	17	35	14	-	-	-	-
63004	20	42	16	-	-	-	-
63005	25	47	16	-	-	-	-
63006	30	55	19	-	-	-	-
63007	35	62	20	-	-	-	-
63008	40	68	21	-	-	-	-
63009	45	75	23	-	-	-	-
63010	50	80	23	-	-	-	-