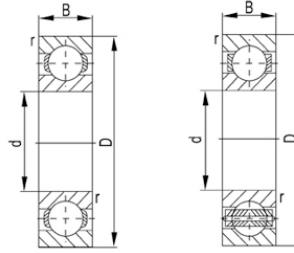
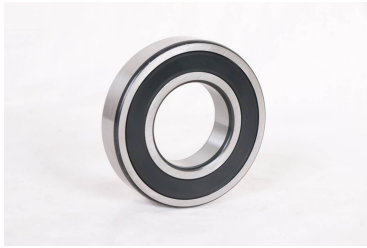


62200 系列



轴承型号	尺寸 [mm]				基本额定功率(kN)		Mass
	d	D	B	rs min	动态(Cr)	静态(Cor)	Kg
62201	12	32	14	1	6.82	3.06	0.053
62202	15	35	14	1	7.64	3.72	0.065
62203	17	40	16	1	9.57	4.79	0.096
62204	20	47	18	1.5	12.84	6.65	0.145
62205	25	52	18	1.5	14.02	7.88	0.172
62206	30	62	20	1.5	19.46	11.31	0.275
62207	35	72	23	2	25.67	15.3	0.41
62208	40	80	23	2	29.52	18.14	0.616
62209	45	85	23	2	31.67	20.68	0.625
62210	50	90	23	2	35.07	23.18	0.726