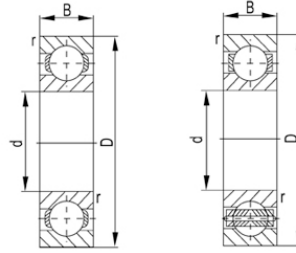
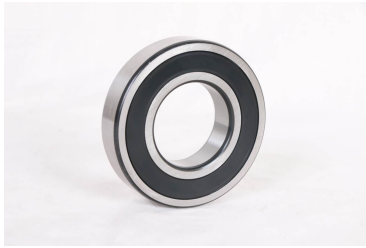


1600 系列



| 轴承型号 | 尺寸 [mm] |        |        |        | 基本额定功率(kN) |         | Mass   |
|------|---------|--------|--------|--------|------------|---------|--------|
|      | d       | D      | B      | rs min | 动态(Cr)     | 静态(Cor) | Kg     |
| 1602 | 6.35    | 17.462 | 6.35   | 0.3    | 1.97       | 0.73    | 0.0064 |
| 1603 | 7.938   | 22.225 | 7.144  | 0.3    | 3.29       | 1.36    | 0.0095 |
| 1604 | 9.525   | 22.225 | 7.144  | 0.4    | 3.33       | 1.41    | 0.0086 |
| 1605 | 7.938   | 23.019 | 7.938  | 0.3    | 3.33       | 1.41    | 0.0168 |
| 1606 | 9.525   | 23.019 | 7.938  | 0.4    | 3.33       | 1.41    | 0.0218 |
| 1607 | 11.112  | 23.019 | 7.938  | 0.4    | 2.69       | 1.27    | 0.0222 |
| 1614 | 9.525   | 28.575 | 9.525  | 0.6    | 3.92       | 2.25    | 0.035  |
| 1615 | 11.112  | 28.575 | 9.525  | 0.6    | 3.92       | 2.25    | 0.034  |
| 1616 | 12.7    | 28.575 | 9.525  | 0.6    | 3.92       | 2.25    | 0.03   |
| 1620 | 11.112  | 34.925 | 11.112 | 0.6    | 5.9        | 3.5     | 0.05   |
| 1621 | 12.7    | 34.925 | 11.112 | 0.6    | 5.9        | 3.5     | 0.048  |
| 1622 | 14.288  | 34.925 | 11.112 | 0.6    | 5.9        | 3.5     | 0.04   |
| 1623 | 15.875  | 34.925 | 11.112 | 0.6    | 5.9        | 3.5     | 0.048  |
| 1628 | 15.875  | 41.275 | 12.7   | 0.6    | 7.25       | 3.5     | 0.072  |
| 1630 | 19.05   | 41.275 | 12.7   | 0.6    | 7.25       | 4.45    | 0.065  |
| 1633 | 15.875  | 44.45  | 12.7   | 0.6    | 7.25       | 4.45    | 0.092  |
| 1635 | 19.05   | 44.45  | 12.7   | 0.6    | 7.25       | 4.45    | 0.085  |
| 1638 | 19.05   | 50.8   | 14.288 | 0.8    | 10.8       | 4.45    | 0.12   |
| 1640 | 22.225  | 50.8   | 14.288 | 0.8    | 10.8       | 6.95    | 0.112  |
| 1641 | 25.4    | 50.8   | 14.288 | 0.8    | 10.8       | 6.95    | 0.1    |
| 1652 | 28.575  | 63.5   | 15.875 | 0.8    | 12.8       | 6.95    | 0.21   |
| 1654 | 31.75   | 63.5   | 15.875 | 0.8    | 12.8       | 8.4     | 0.19   |

## 1600 系列

---

|      |      |      |      |     |      |      |       |
|------|------|------|------|-----|------|------|-------|
| 1657 | 31.8 | 65.1 | 17.5 | 0.8 | 16.5 | 10.6 | 0.215 |
| 1658 | 33.3 | 65.1 | 17.5 | 0.8 | 16.5 | 10.6 | 0.2   |