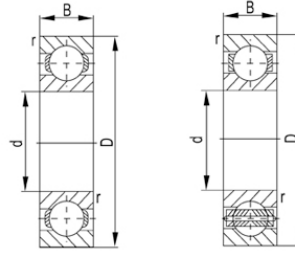
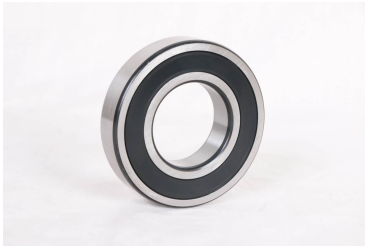


6400 系列



轴承型号	尺寸 [mm]				基本额定功率(kN)		Mass
	d	D	B	rs min	动态(Cr)	静态(Cor)	Kg
6403	17	62	17	1	22.5	10.8	0.268
6404	20	72	19	1	31	15.2	0.4
6405	25	80	21	1.5	38.2	19.2	0.529
6406	30	90	23	1.5	56.8	24.5	0.71
6407	35	100	25	1.5	56.8	29.5	0.926
6408	40	110	27	2	63.7	36.6	1.23
6409	45	120	29	2	77.2	45.1	1.53
6410	50	130	31	2.1	83	49.5	1.88
6411	55	140	33	2.1	100	62.3	2.29
6412	60	150	35	2.1	110	70.8	2.77
6413	65	160	37	2.1	118	79.2	3.3
6414	70	180	42	3	144	104	4.83
6415	75	190	45	3	154	115	5.87
6416	80	200	48	3	164	125	6.84
6417	85	210	52	4	173	136	8.07
6418	90	225	54	4	184	149	9.78